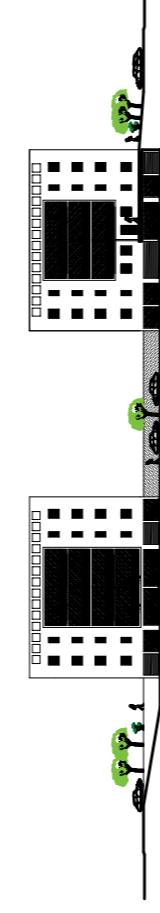


COMUNE DI MONTOPOLI IN VAL D'ARNO

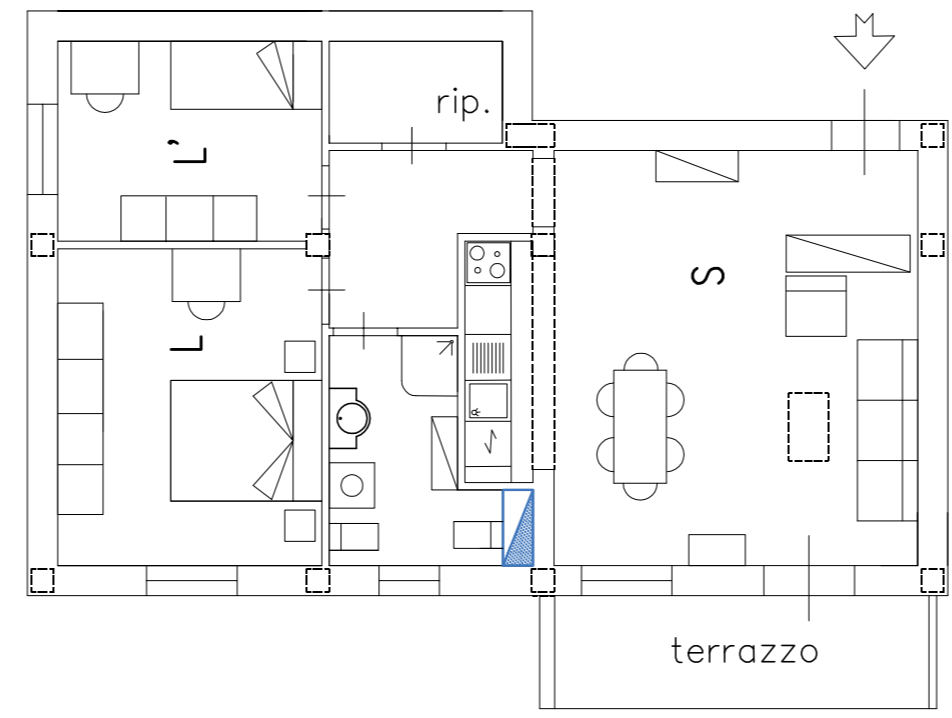
PIANO DI RECUPERO "CALZATURIFICIO BERTINI"  
IN LOC. SAN ROMANO VIA CAMPANIA N. 19 E 13.



PROPRIETA': BERTINI snc  
PROGETTO: Arch. PAOLO SORDI  
OGGETTO: ABACO TIPOLOGIE APPARTAMENTI  
AGGREGABILI E SOSTITUIBILI  
Pianta con arredi: 1/100

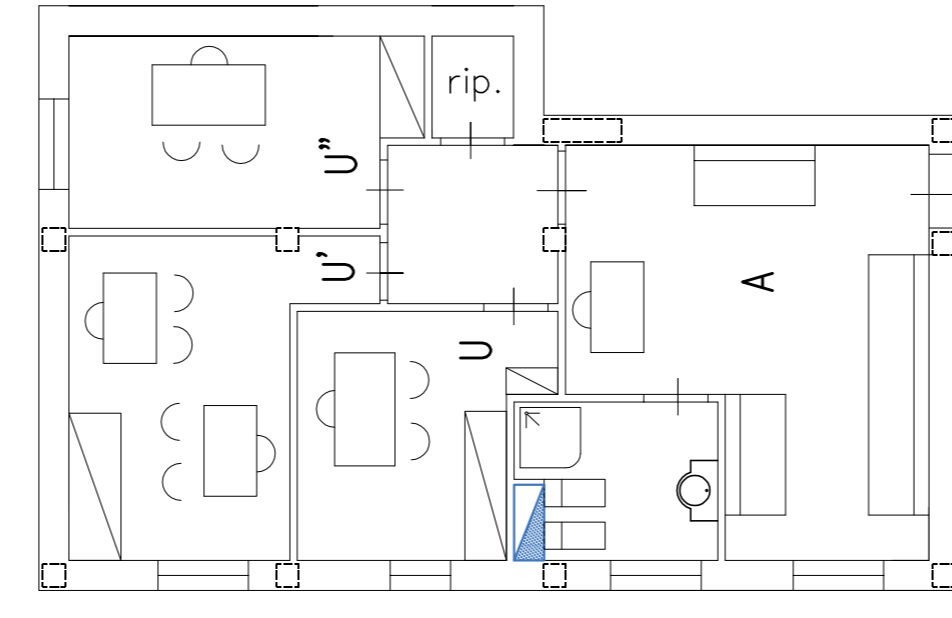
TAVOLA 8

**TIPOLOGIA "1"**  
appartamento con 3 posti letto



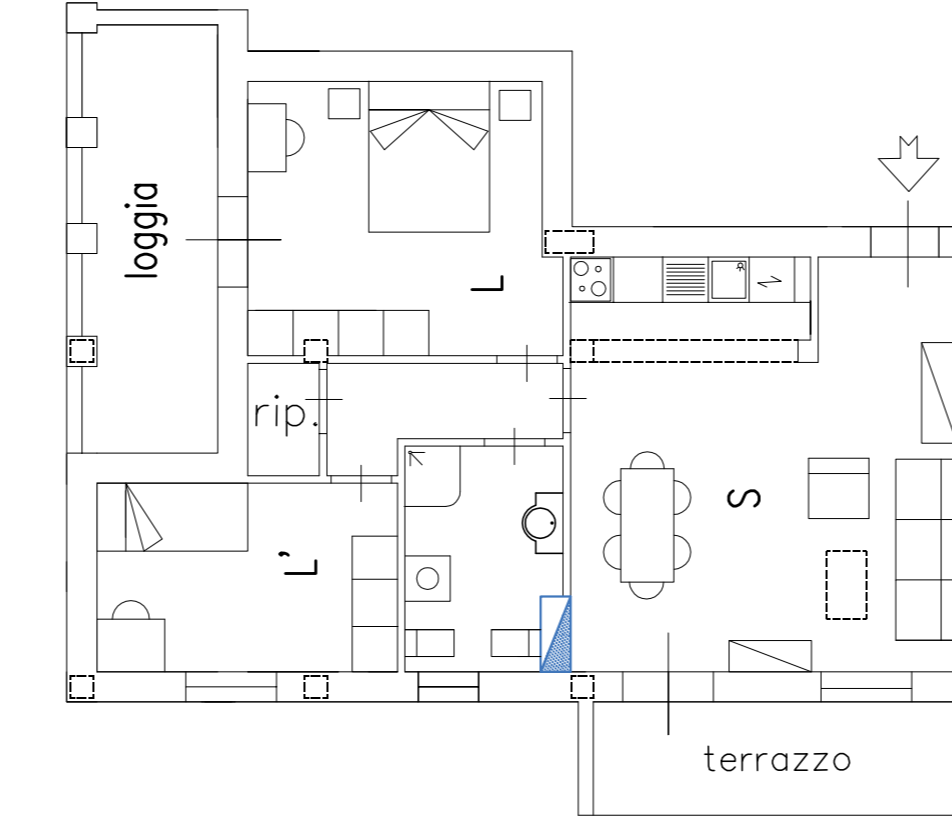
S=mq 30,18  
L=mq 14,70  
L'=mq 9,40

**TIPOLOGIA "2"**  
Ufficio



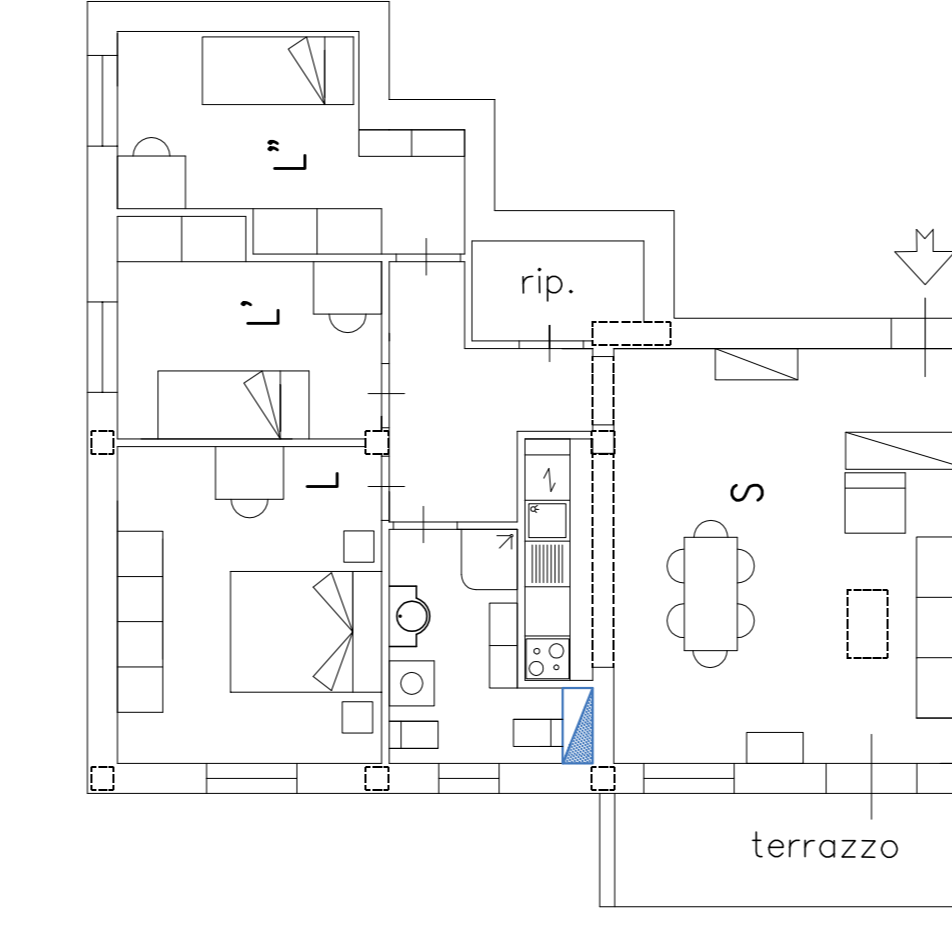
A=mq 21,80  
U=mq 8,14,20  
U'=mq 12,00

**TIPOLOGIA "3"**  
appartamento con 3 posti letto



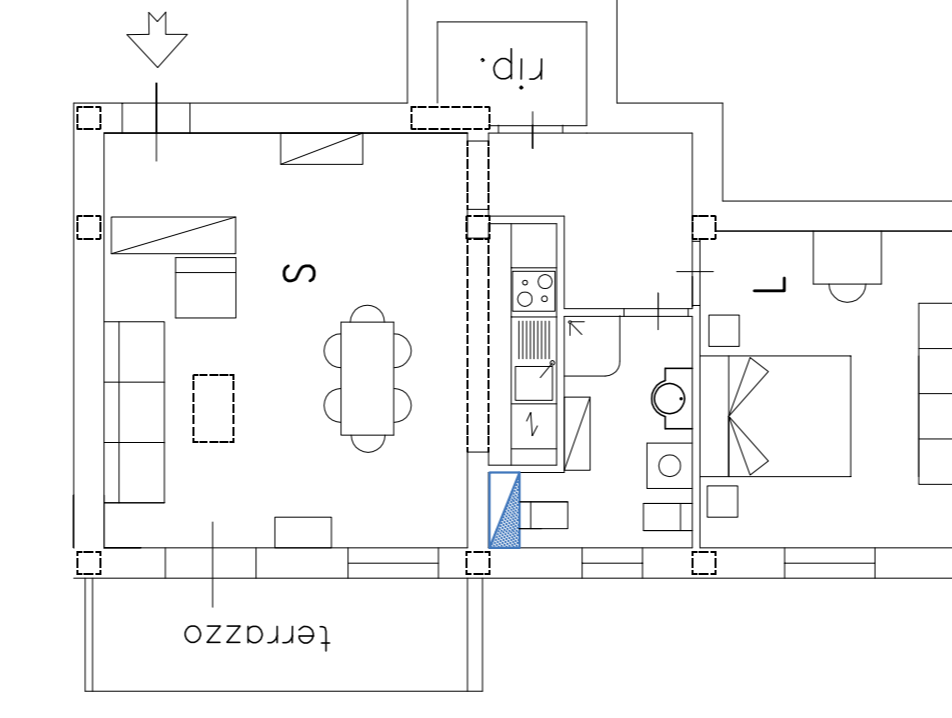
S=mq 28,20  
L=mq 14,70  
L'=mq 10,00

**TIPOLOGIA "4"**  
appartamento con 4 posti letto



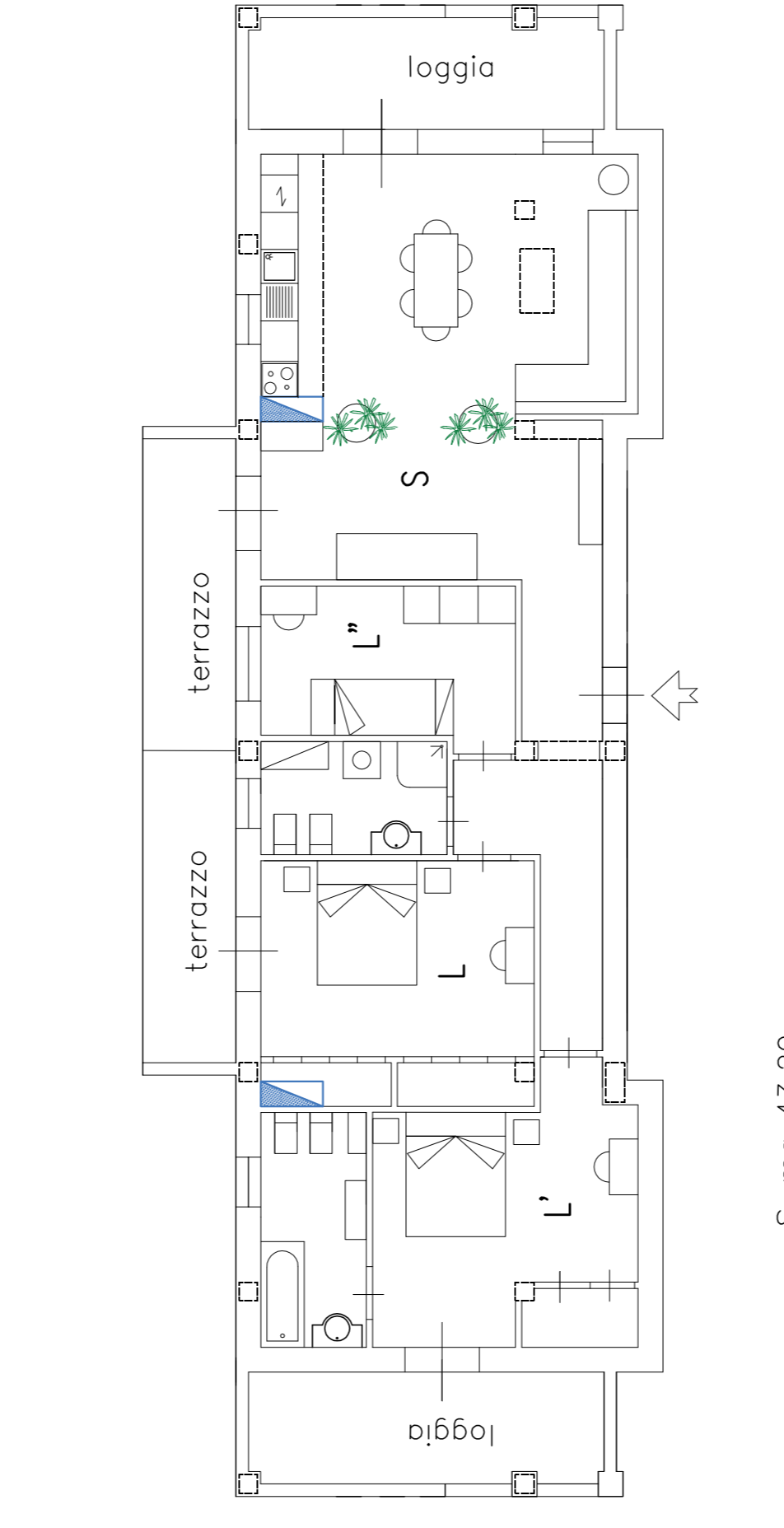
S=mq 30,18  
L=mq 14,70  
L'=mq 9,33,0  
L''=mq 10,70

**TIPOLOGIA "5"**  
appartamento con 2 posti letto



S=mq 30,18  
L=mq 14,70

**TIPOLOGIA "6"**  
appartamento con 5 posti letto



S=mq 43,20  
L=mq 17,00  
L'=mq 12,10  
L''=mq 10,10